



SPINE



CALL: +91 90819 09972

EMAIL: info@shreeharisurgical.com | **WEB:** www.shreeharisurgical.com

SPINE

▶ 1) Monoaxial Screw



Code No.	T1251
Material	Titanium
Diameter (mm)	Ø 4.5mm, Ø 5.5mm, Ø 6.5mm
Length (mm)	25mm to 50mm

▶ 2) Polyaxial Screw



Code No.	T1252
Material	SS 316L
Diameter (mm)	Ø 4.5mm, Ø 5.5mm, Ø 6.5mm
Length (mm)	25mm to 50mm

▶ 3) Monoaxial Reduction Screw



Code No.	T1253
Material	Titanium
Diameter (mm)	Ø 5.5mm, Ø 6.5mm
Length (mm)	35mm to 50mm

▶ 4) Polyaxial Reduction Screw



Code No.	T1254
Material	Titanium
Diameter (mm)	Ø 5.5mm, Ø 6.5mm, Ø 7.5mm
Length (mm)	35mm to 50mm

▶ 5) Connecting Rod 5.5 mm



Code No.	T1255
Material	Titanium
Length (mm)	50mm to 400mm

▶ 6) Connecting Rod (Hexagonal End) 5.5 mm



Code No.	T1256
Material	Titanium
Length (mm)	50mm to 400mm

▶ 7) Connecting Rod 3.0 mm



Code No.	T1257
Material	Titanium
Length (mm)	40mm to 100mm

▶ 8) Transverse Connector



Code No.	T1258
Material	Titanium
Size (mm)	5.5mm x 3.0mm

SPINE

9) Crosslink Connector



Code No.	T1259
Material	Titanium
Size (mm)	30mm to 70mm

11) Cervicle Plate



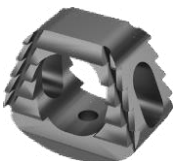
Code No.	T1264
Material	Titanium
Size (mm)	22mm To 60mm

13) Cervicle Revision Bone Screw 4.3mm



Code No.	T1267
Material	Titanium
Size (mm)	10mm To 18mm

15) Cervicle Impacted Fusion Cage



Code No.	T1269
Material	Titanium
Size (mm)	14mm, 16mm x 5mm, 6mm, 7mm

10) Staple



Code No.	T1260
Material	Titanium
Length (mm)	Small, Large

12) Cervicle Bone Screw 4.0mm



Code No.	T1265
Material	Titanium
Length (mm)	10mm To 18mm

14) Self Drilling Cervicle Bone Screw 4.0mm



Code No.	T1268
Material	Titanium
Length (mm)	10mm To 18mm

16) Anterior Cervicle Interbody Fusion Cage



Code No.	T1270
Material	Titanium
Length (mm)	12mm, 14mm, 16mm x 4mm, 5mm, 6mm, 7mm

SPINE

▶ 17) Polyaxial Occipital Screw



Code No.	T1271
Material	Titanium
Diameter (mm)	Ø 3.5mm, Ø 4.0mm
Length (mm)	14mm to 32mm

▶ 19) Posterior Occipital Combi. Connecting Rod (Step Rod)



Code No.	T1273
Material	Titanium
Size (mm)	3.2mm (150mm) x 5.5mm (270mm)

▶ 21) Posterior Occipital Y Plate (With Connector Set)



Code No.	T1275
Material	Titanium
Size (mm)	31mm, 37mm, 45mm

▶ 23) Posterior Occipital Screw



Code No.	T1277
Material	Titanium
Size (mm)	40mm to 100mm

▶ 18) Posterior Occipital Connecting Rod (Bend) 3.2mm



Code No.	T1272
Material	Titanium
Length (mm)	55mm, 65mm, 75mm, 85mm x 250mm

▶ 20) Posterior Occipital Connecting Rod (Straight)



Code No.	T1274
Material	Titanium
Size (mm)	200mm

▶ 22) Posterior Occipital Plate With Rod



Code No.	T1276
Material	Titanium
Size (mm)	3.2mm (250mm) x 4 Hole

▶ 24) TLIF Cage (Transforaminal Lumbar Interbody Fusion)



Code No.	T1278
Material	Titanium
Size (mm)	25mm, 30mm x 8mm, 9mm, 10mm, 11mm, 12mm

SPINE

▶ 25) TLIF Kidney Cage
(Transforaminal Lumbar Interbody Fusion)



Code No.	T1279
Material	Titanium
Size (mm)	4°, 8°, 11° x 7mm, 8mm, 9mm, 10mm, 11mm

▶ 26) PLIF Bullet Cage
(Posterior Lumbar Interbody Fusion)



Code No.	T1280
Material	Titanium
Length (mm)	20mm, 25mm x 8mm, 9mm, 10mm, 11mm, 12mm

▶ 27) PEEK TLIF Kidney Cage
(Transforaminal Lumbar Interbody Fusion)



Code No.	T1282
Material	PEEK
Length (mm)	4°, 8°, 11° x 7mm, 8mm, 9mm, 10mm, 11mm

▶ 28) PEEK Anterior Cervicle Interbody Fusion Cage



Code No.	T1283
Material	PEEK
Size (mm)	12mm, 14mm, 16mm x 4mm, 5mm, 6mm, 7mm





SHREE HARI SURGICAL

Plot No. 3, Survey No. 66/4, Gurudev Industrial Area
Near Leyars Bakery, Ravki Road, Rajkot, Gujarat 360004

CALL: +91 90819 09972

WEB: www.shreeharisurgical.com

EMAIL: info@shreeharisurgical.com

FOLLOW US:



Authorized Distributor